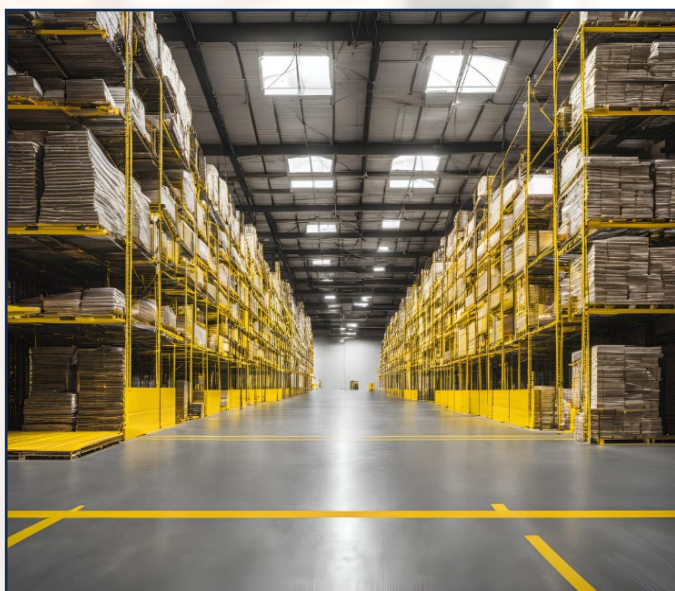


MPC SAFETY LINES

MPC Safety lines consists of using our 2 component, 100% solids, high build epoxy coating MPC-100 with our bold safety colorant packs to create traffic lines on industrial and commercial concrete floors. Epoxy marking lines are recommended for use in production areas, warehouses, and mechanical rooms. The safety lines can be top coated with our polyaspartic or urethane coatings to provide additional UV protection/ slip resistance.

WHERE TO USE

- Walkways and pedestrian alleyways
- For marking hazard zones and loading areas
- For marking crosswalks where forklift traffic can occur
- To indicated areas to be kept clear for safety reason / physical and health risks/ or operational purposes.



SYSTEM COMPONENTS

Lines ➤ MPC-100 is a 100 % solids epoxy coating system. Safety colors are available in 16 oz jars / 2 jars are required per 3-gallon mixture.
(8-12mils thickness x 2 coats)

Product Coverage:

3-gallon kit of MPC-100 + 2 pods of required safety color.

21,600 linear feet / @ 8 mils. lines 4 in thick / per 3-gallon kit

14,400 linear feet / @ 12 mils. lines 4 in thick / per 3-gallon kit

OSHA/ANSI LINE WIDTH REQUIREMENTS

➤ **To ensure maximum visibility the required width set forth by OSHA and ANSI is 2 inches. Typical applications use painted lines between 2" -6" in width.**

*Refer to individual data sheets for product specifications, application, and wait times between system components.



MPC-700
WHITE

MPC-707
BLACK

MPC-708
SAFETY YELLOW

MPC-709
SAFETY RED

MPC-710
SAFETY BLUE

*Colors shown above are approximations. Final color selection should be based on applied samples or mock ups to replicate jobsite conditions.

OSHA STANDARD 1910.144 SAFETY COLOR GUIDE

	Aisleways & Traffic Lanes; 'Paths of Egress'; Work Cells
	Production -OR- Racks, Machines, Carts, Benches, and other equipment that does not fall under any other color guidelines
	Defect/Scrap Area; Red Tag Area
	Materials or Product Inspection -OR- energized equipment
	Raw Materials -OR- First Aid-Related Locations
	Works-In-Progress
	Finished Goods
	Areas which present physical or health risks to employee. Indicated that extra caution is to be exercised. yellow/bl
	Areas to be kept clear for safety reasons (around emergency access points, electrical panels, firefighting equipment, etc.)
	Areas to be kept clear for operational purposes (non-safety related)